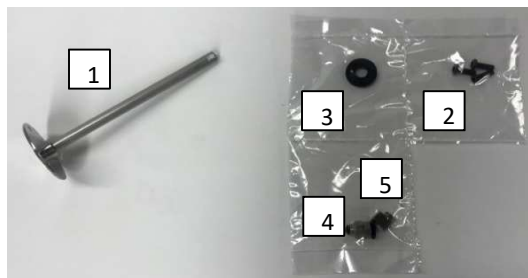


●Set list

num	product name	pcs
1	pneumatic tool	1
2	screws M3×10	3
3	holder	1
4	joint straight	1
5	joint elbow	1

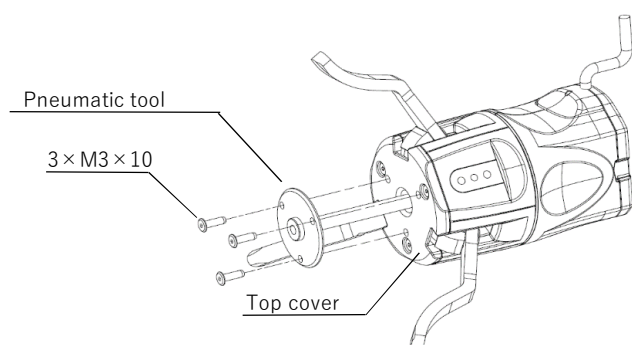


●Specifications

positive pressure	0.5	MPa
negative pressure	-100	kPa
mounting area	M5	

●Assembly process

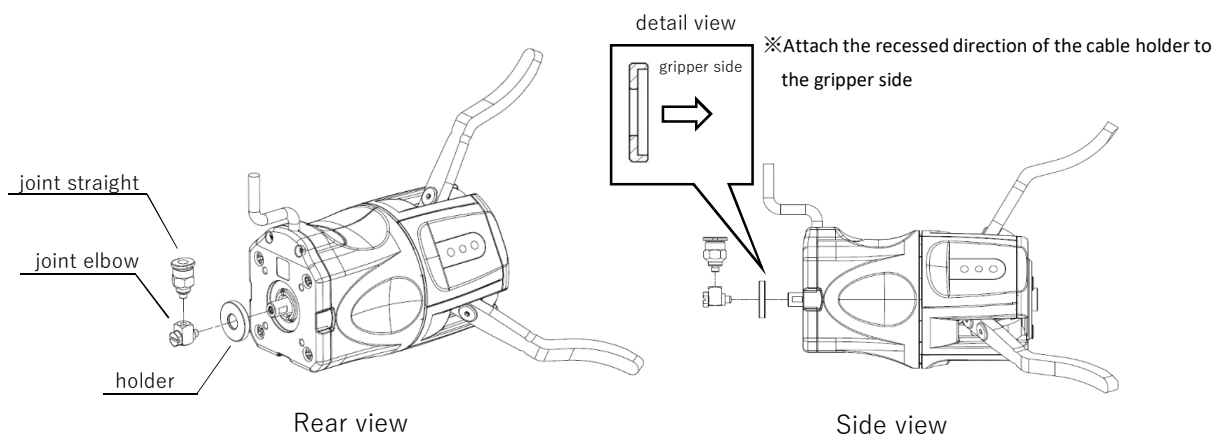
1. Pass the pneumatic tool through the center hole of the top cover and tighten the screw.



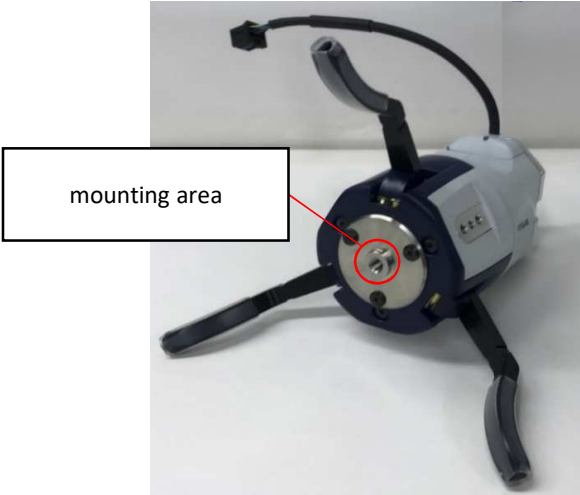
Front view

2. Insert the holder into the rear shaft of the pneumatic tool.

Upwardly attach the joint elbow and joint straight.



3. Installation is completed. Attach the suction pad to mounting area and use it.



Example:

manufacturer	Pisco
Model Number	VPE30PBS23M5-FS

